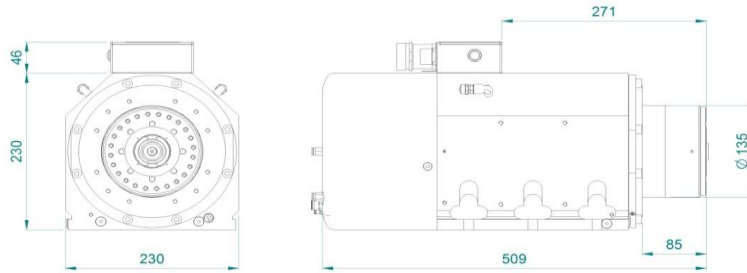
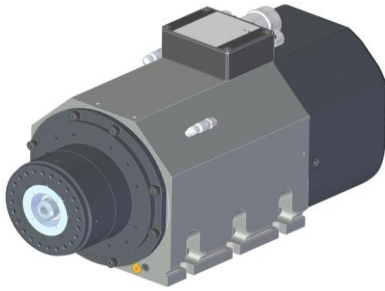
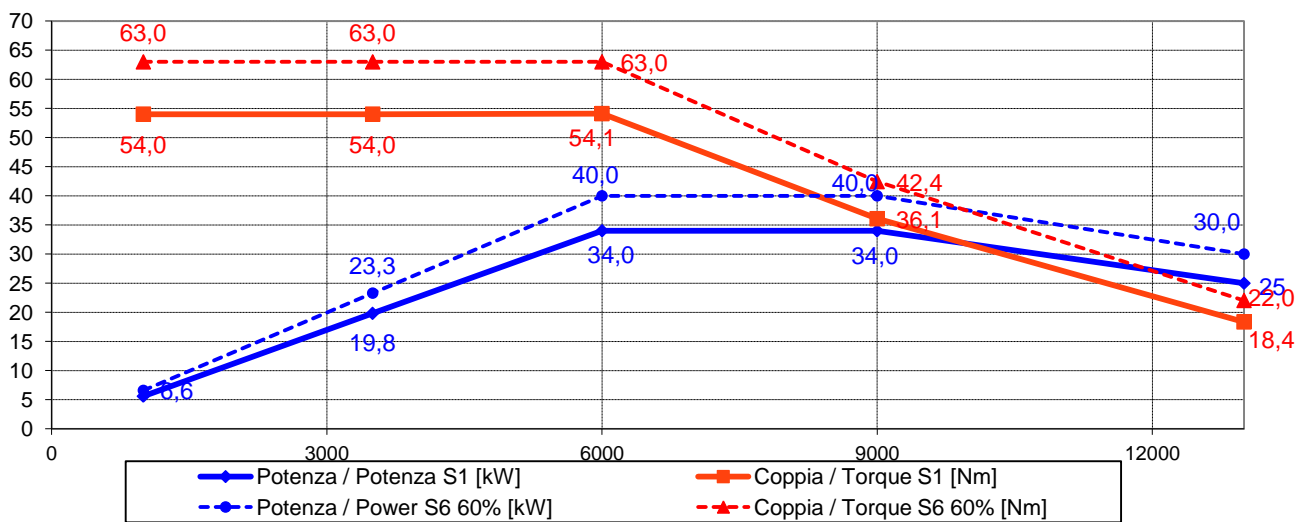




Electrospindle ATC 34kW 13.000 rpm QM-2 34/6 13



Prestazioni - Performances



Specifiche tecniche/ Technical Specifications

Tipologia elettromandrino / Electrospindle type	Asincrono-4 poli / Asynchronous-4 poles
Attacco utensile / Tool interface	HSK 63A
Velocità rotazione max / Max speed	15000 rpm
Raffreddamento / cooling	Liquido / Liquid
Cuscinetti / Ball bearings	Obliqui ad alta velocità-alta precisione/High speed high precision angular contact ball bearings
Lubrificazione cuscinetti / Bearings lubrication	Grasso a vita / Grease long life
Connessione pneumatiche / Pneumatic connection	Sblocco uten. / Release. tool: E6 6-6.5 bar Pressurizzazione / Air seal. E4 6-6.5 bar
MQL / Oilmist	Soffio cono-aria utensile / Taper cleaning-air tool E8 4-4.5 bar
Potenza max. (S1 - S6) / Max. Power.(S1 - S6)	Ingresso olio / Oil inlet E6 34 kW @6000 Rpm (S1) / 40 kW @ 6000 Rpm (S6)
Coppia max. (S1 - S6) / Max. Torque (S1 - S6)	54 Nm (S1) / 63 Nm (S6)
Corrente (S1 - S6) / Current (S1 - S6)	61 A (S1) / 72 A (S6)
Tensione / Voltage	380 V
Rotazione / Rotation	CW - CCW
Azionamento / Supply	Con inverter / By inverter
Sensoristica / Sensors	S1 Afferraggio utensile / S1 Tool lock S2 Pinza aperta / S2 Open clamp S3 Rotazione albero / S3 Spindle rotation S5 Ritorno pistone / S5 Piston back
Encoder	SYN/COS 1Vpp 300 imp./giro+imp. rifer. SYN/COS 1Vpp 300 pulse/rev.+ref. mark
Peso / Weight	78 kg

Dati tecnici non impegnativi, Hiteco, si riserva il diritto di modificarli senza darne preavviso.

A termine di legge è rigorosamente vietato riprodurre o comunicare a terzi il contenuto del presente documento.

Technical Data are purely indicative and Hiteco, reserves the right to make changes without prior notice.

According to the law it is strictly forbidden to reproduce or transmit to third parties the content of this document.